

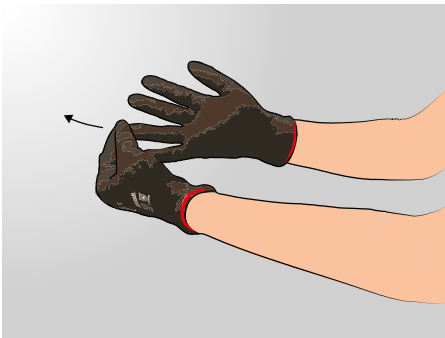
HOW TO PROPERLY DOFF MECHANICAL GLOVES

Doffing Between Uses

Proper doffing and disposal of protective reusable gloves is key to helping prevent the spread of viruses between workers and their surrounding environments.

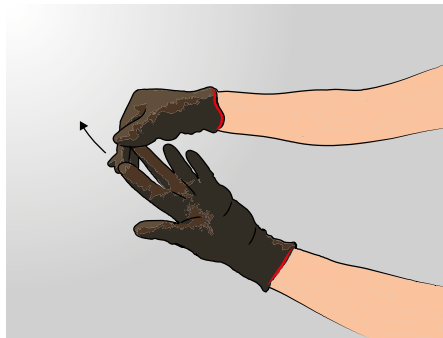
Follow the illustrations below to properly doff mechanical gloves in order to disinfect and re-use.

STEP 1 – Loosen Glove at Fingertips



Pull one glove loose at the fingers using the opposite hand, but **do not remove the glove completely**

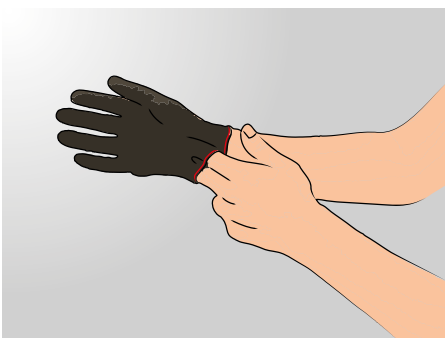
STEP 2 – Loosen Opposite Glove at Fingertips and Remove



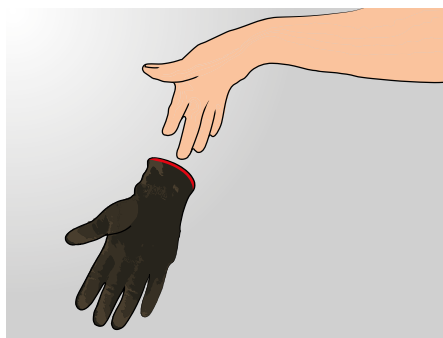
Use the first hand with a loosened glove to **pull the second glove loose at the fingers**, and then pull the glove off



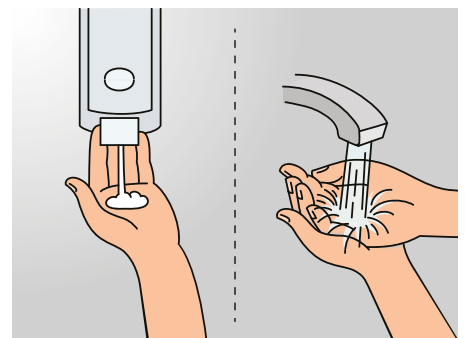
STEP 3 – Slide Glove Off



Slide two fingers inside the cuff of the first glove and slide it off the hand



STEP 4 – Wash Hands



Always **wash your hands with soap and water for 20 seconds** after removing PPE

For more information on how to properly sanitize reusable Mechanical gloves between laundering cycles, visit the **Mechanical Protection Resources** section on the [Ansell Safety Resources](https://www.ansell.com/COVID19) page

For more information, visit www.ansell.com/COVID19

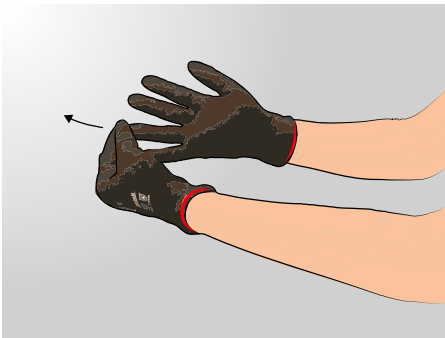
HOW TO PROPERLY DOFF MECHANICAL GLOVES

Doffing at the End of a Glove's Life Cycle

Proper doffing and disposal of protective reusable gloves is key to helping prevent the spread of viruses between workers and their surrounding environments.

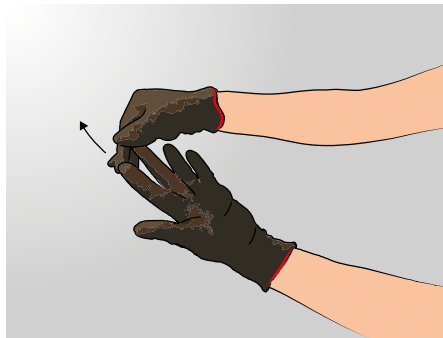
Follow the illustrations below to properly doff mechanical gloves at the end of their life cycle.

STEP 1 – Loosen Glove at Fingertips



Pull one glove loose at the fingers using the opposite hand, but **do not remove the glove completely**

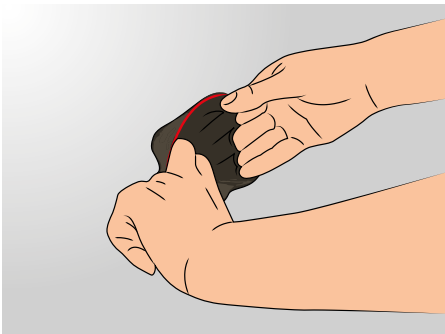
STEP 2 – Loosen Opposite Glove at Fingertips and Remove



Use the first hand with a loosened glove to **pull the second glove loose at the fingertips**, and then pull the glove off



STEP 3 – Turn Glove Inside-Out and Remove



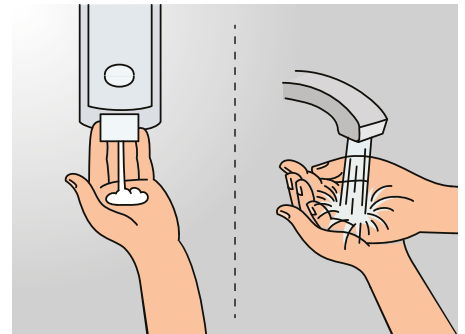
Slide **two fingers inside the cuff** of the first glove and remove, **turning the glove inside out** as it slides off the hand

STEP 4 – Dispose of Gloves Properly



Glove disposal depends on prior use. Contaminated gloves should be **disposed of per the guidelines** of the contaminant source

STEP 5 – Wash Hands



Always **wash your hands with soap and water for 20 seconds** after removing PPE

For more information, visit www.ansell.com/COVID19